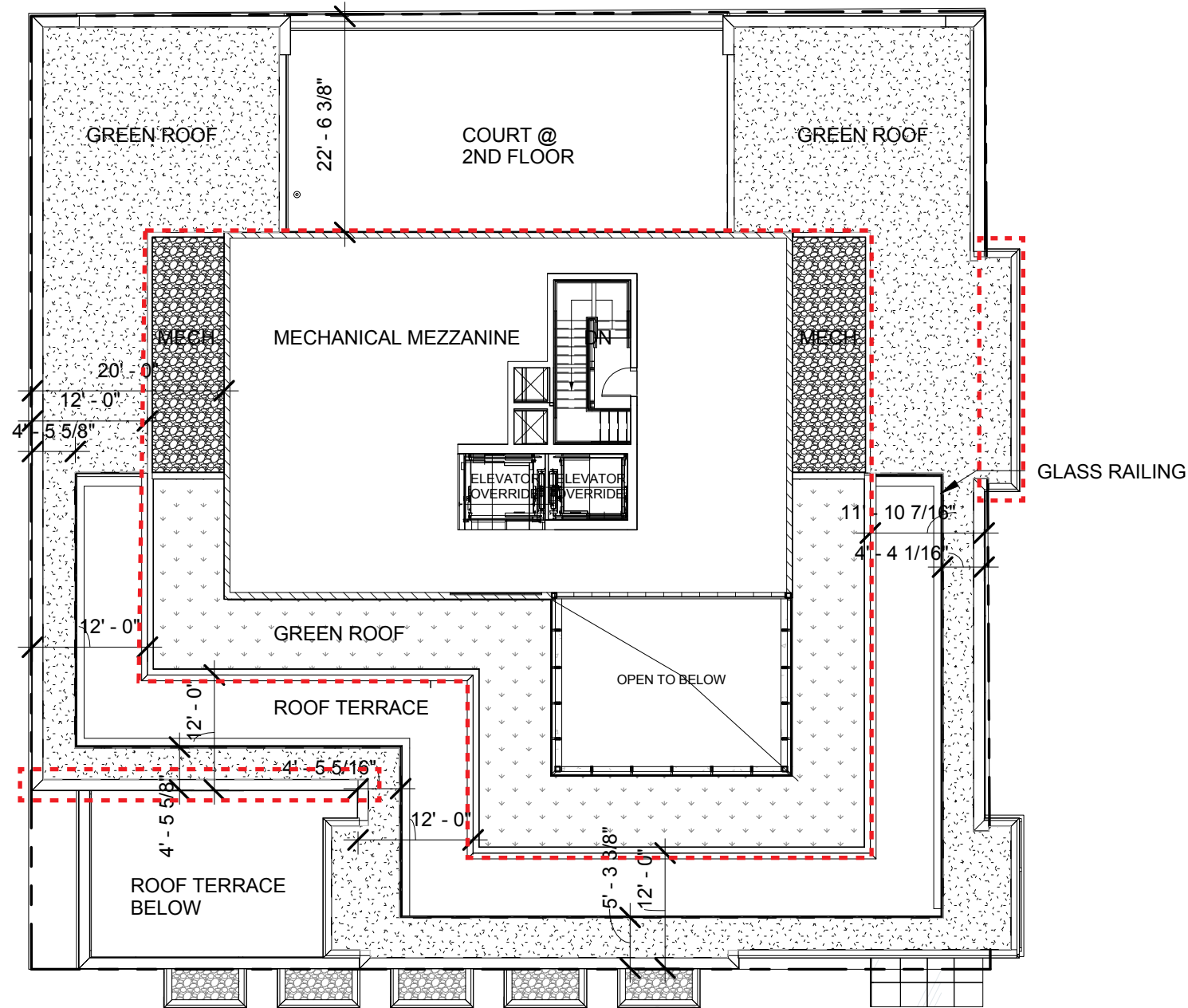
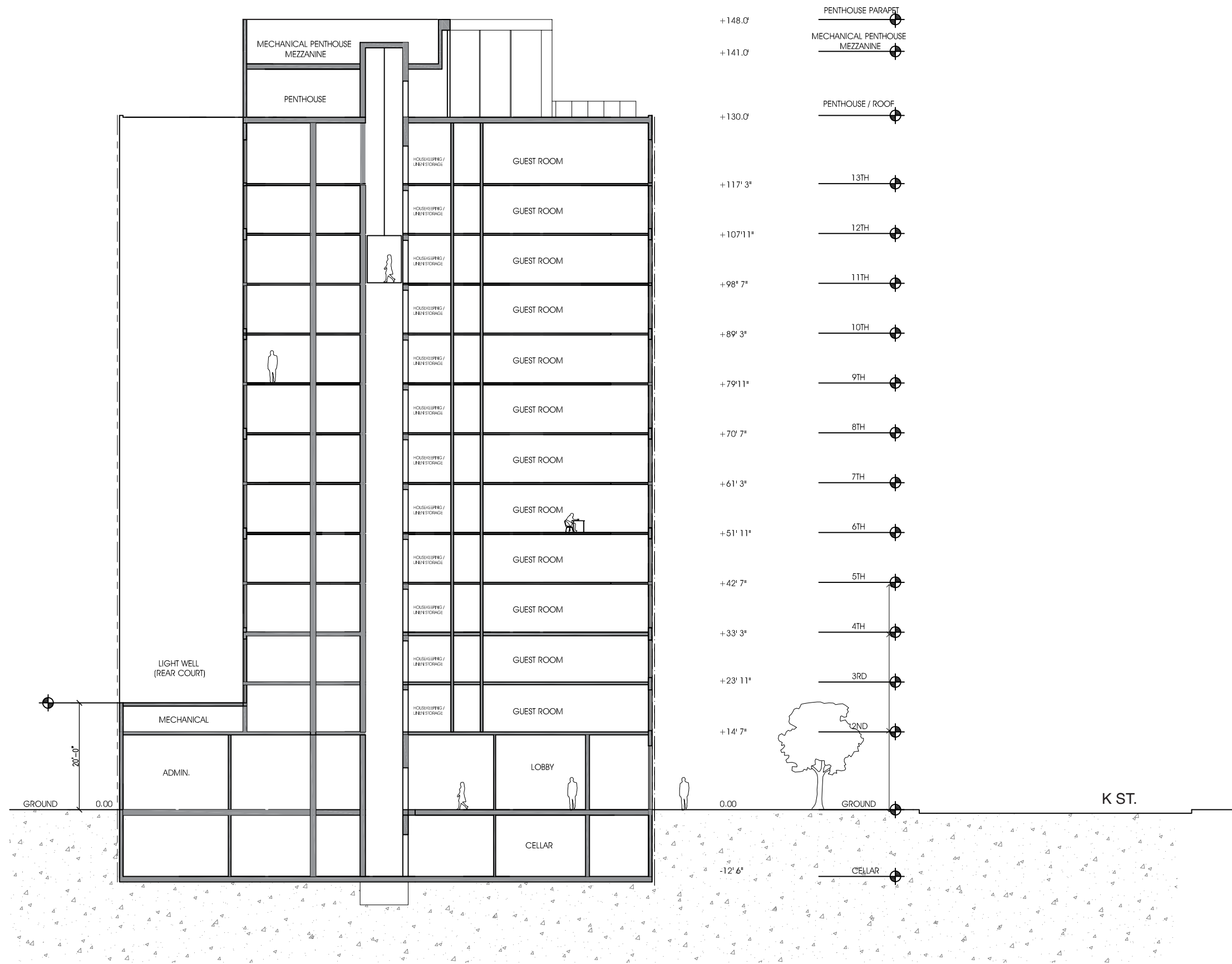
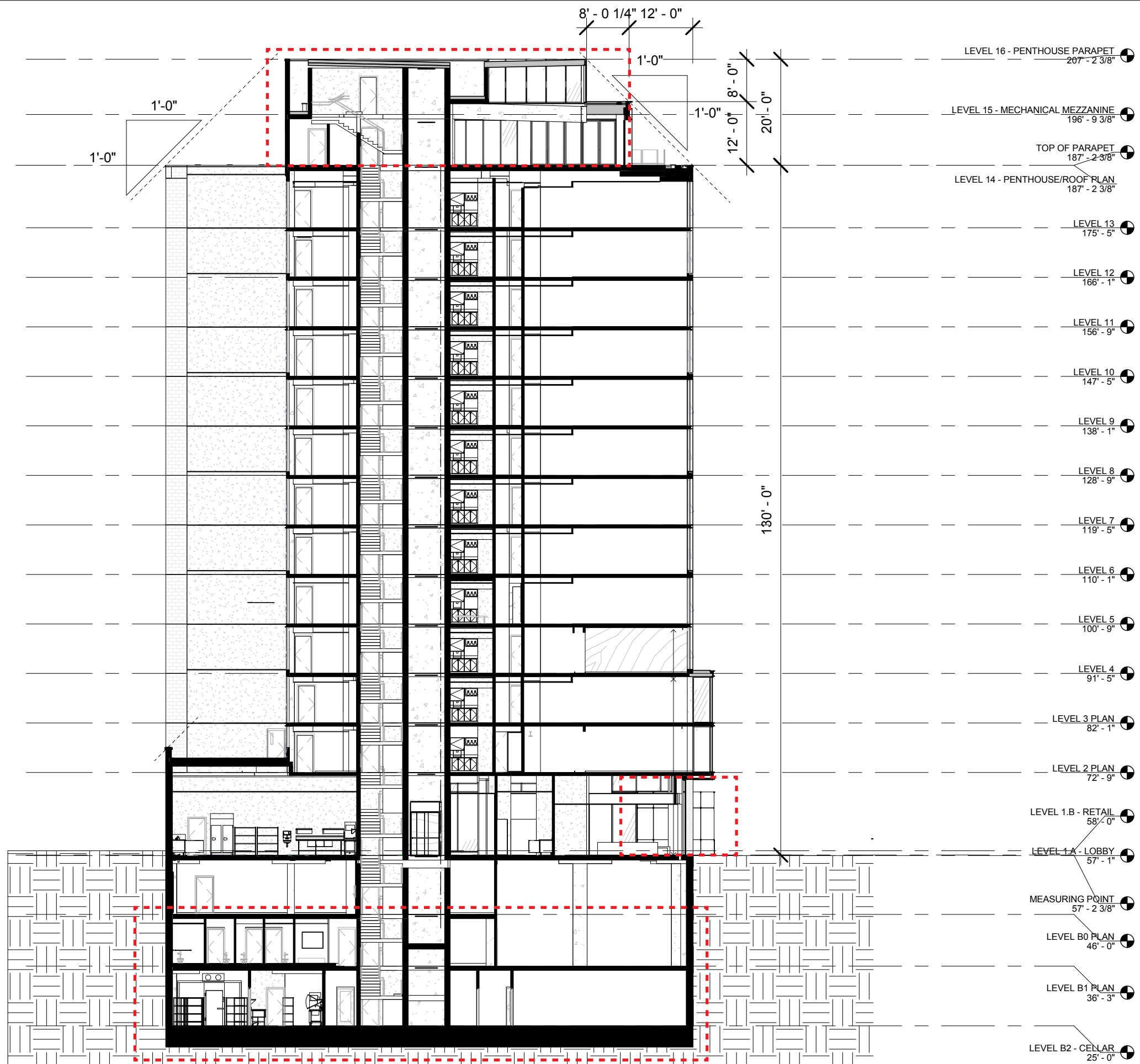


GREEN ROOF : 1,012 SF



A013





6TH & K HOTEL N.W, WASH. DC

BUILDING SECTION 1-1 | PROPOSED

SCALE: 1" = 20'-0"

DATE: 09.17.2018

A014

FILLAT+
ARCHITECTURE

BLANK

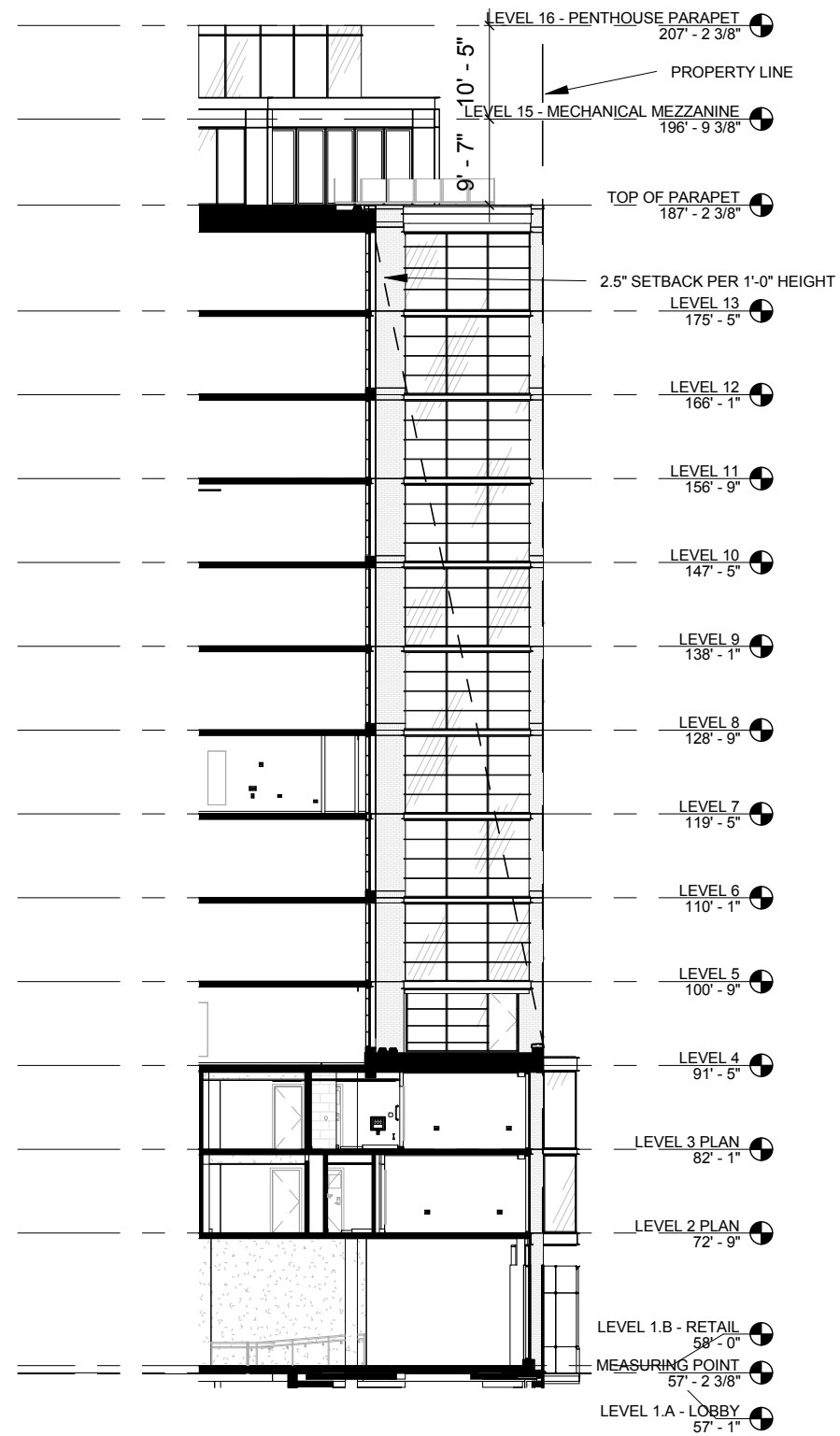
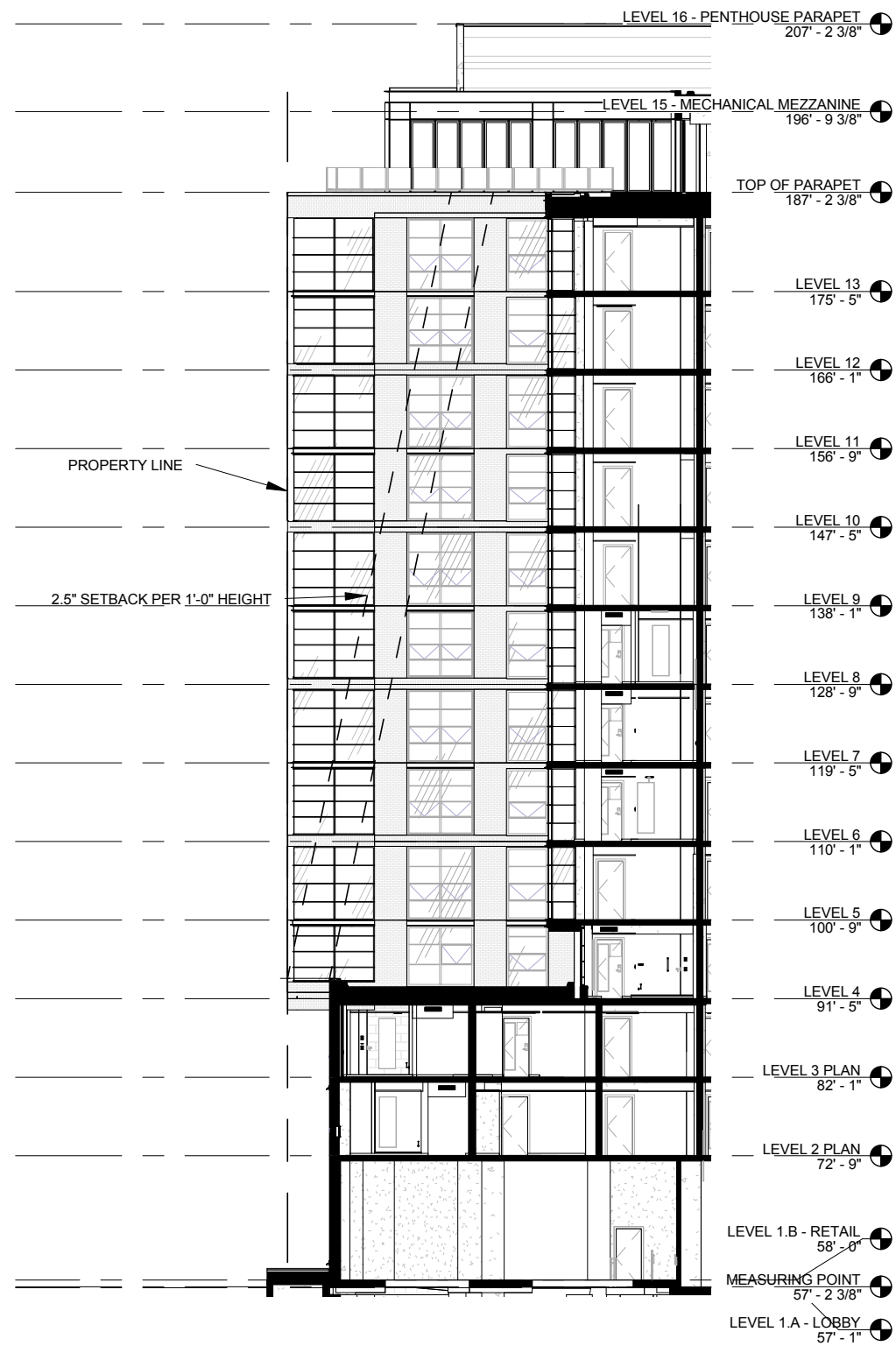
A015

6TH & K HOTEL N.W, WASH. DC

BLANK

SCALE:
DATE: 09.17.2018

FILLAT+
ARCHITECTURE



A015

6TH & K HOTEL N.W., WASH. DC

COURT SECTION | PROPOSED

SCALE: 1" = 20'-0"
DATE: 09.17.2018

FILLAT+
ARCHITECTURE



BLACK BRICK

GLASS RAILING

BLACK BRICK

INDUSTRIAL WINDOWS

10'

5'

20'

10' PUBLIC ALLEY

6TH ST.

A016

6TH & K HOTEL N.W., WASH. DC

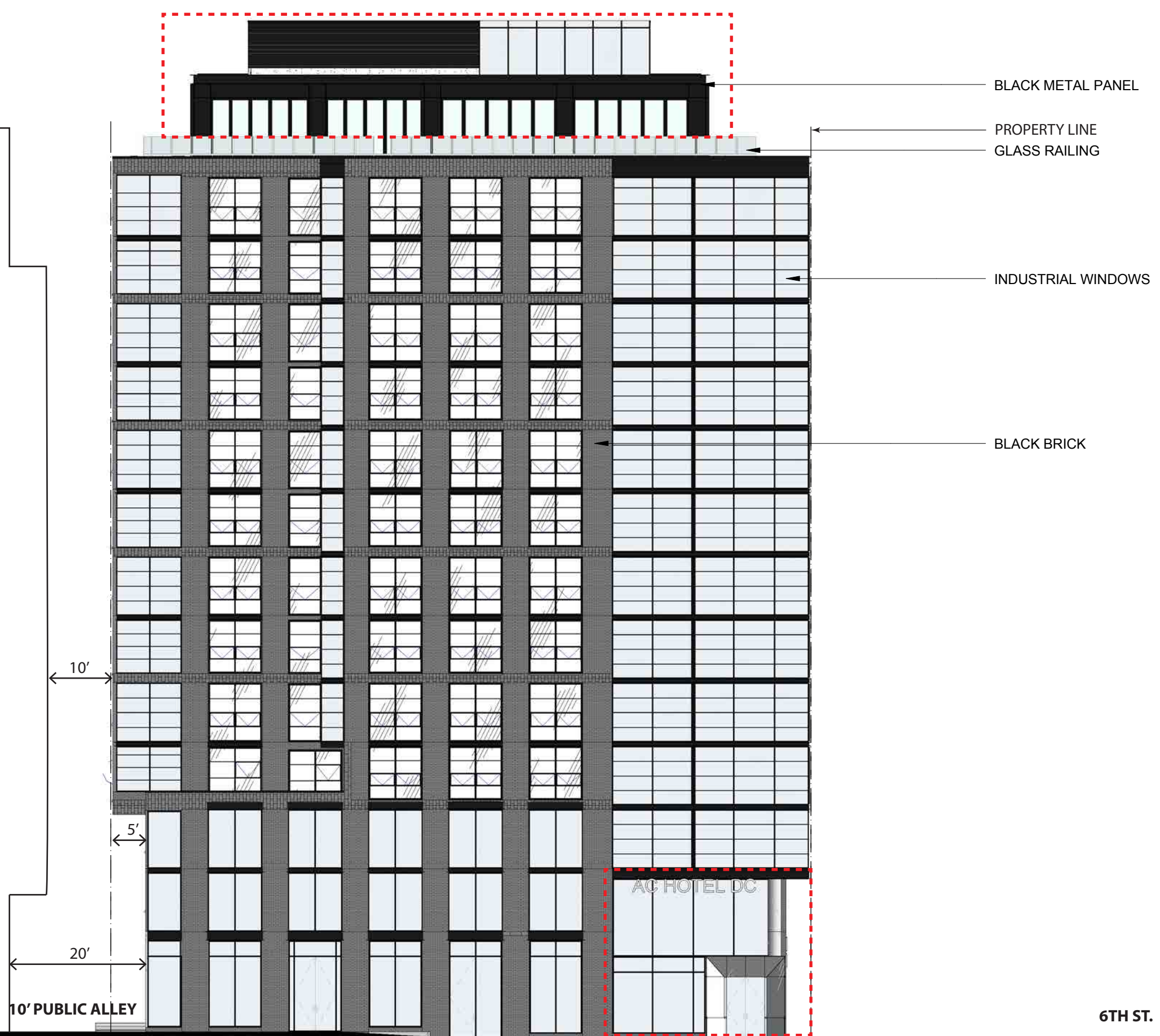
SOUTH ELEVATION | APPROVED

SCALE: 1/16"=1'-0"

DATE: 09.17.2018

FILLAT+
ARCHITECTURE

© Copyright 2016. FILLAT + ARCHITECTURE All rights reserved.



BLACK METAL PANEL

PROPERTY LINE
GLASS RAILING

INDUSTRIAL WINDOWS

BLACK BRICK

10'

5'

20'

10' PUBLIC ALLEY

6TH ST.

A016



6TH ST.

6TH & K HOTEL N.W., WASH. DC

NORTH ELEVATION | APPROVED

SCALE: 1/16"=1'-0"
DATE: 09.17.2018

FILLAT+
ARCHITECTURE

BLACK METAL PANEL

GLASS RAILING

INDUSTRIAL WINDOW

INDUSTRIAL WINDOW

BLACK BRICK

EIFS

SPLIT FACE BLOCK

PROPERTY LINE

10'

5'

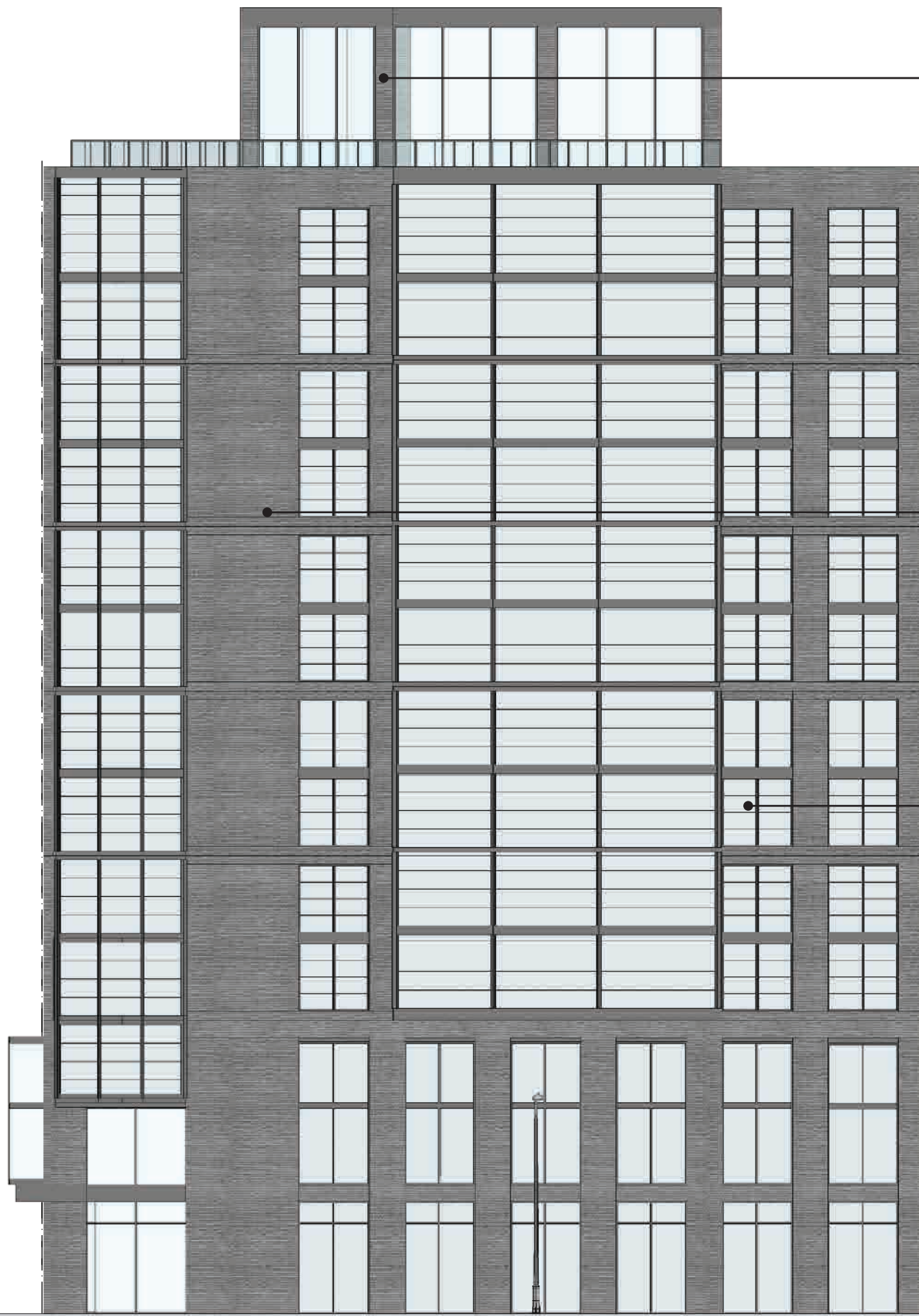
20'

10' PUBLIC ALLEY

6TH ST.

A017

K ST.



BLACK BRICK

BLACK BRICK

INDUSTRIAL WINDOWS



A018

6TH & K HOTEL N.W., WASH. DC

EAST ELEVATION | APPROVED

SCALE: 1/16"=1'-0"

DATE: 09.17.2018

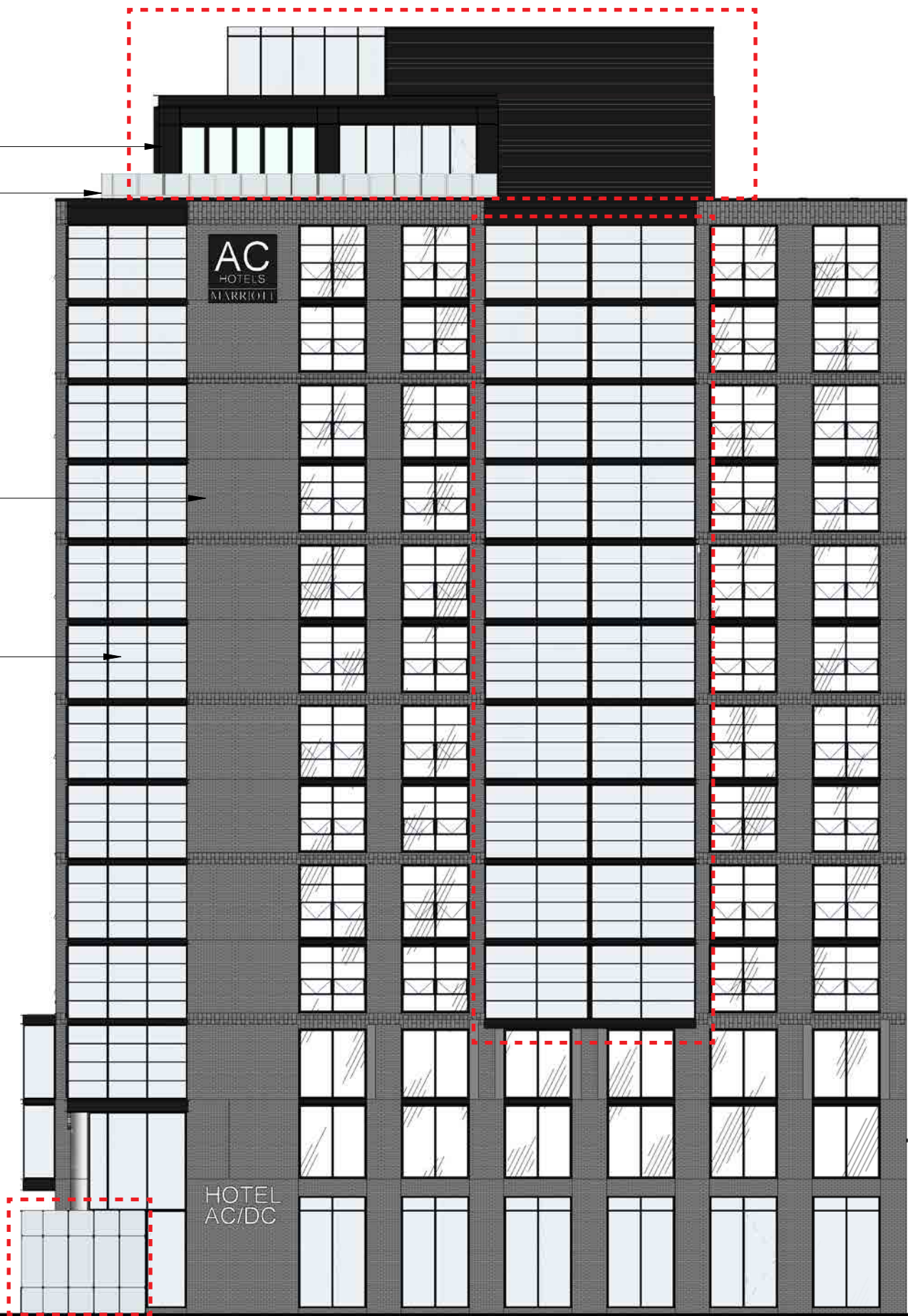
FILLAT+
ARCHITECTURE

BLACK METAL PANEL

GLASS RAILING

BLACK BRICK

INDUSTRIAL WINDOW



K ST.



HOTEL
AC/DC

A018

6TH & K HOTEL N.W, WASH. DC

EAST ELEVATION | PROPOSED

SCALE: 1/16" = 1'-0"

DATE: 09.17.2018

FILLAT+
ARCHITECTURE



BLACK BRICK

BLACK BRICK

INDUSTRIAL WINDOWS

LOW-E GLASS WINDOWS

K ST. A019

6TH & K HOTEL N.W, WASH. DC

WEST ELEVATION | APPROVED

SCALE: 1/16"=1'-0"
DATE: 09.17.2018

FILLAT+
ARCHITECTURE

© Copyright 2016. FILLAT + ARCHITECTURE All rights reserved.

BLACK METAL PANEL

GLASS RAILING

BLACK BRICK

INDUSTRIAL WINDOW

LOUVER

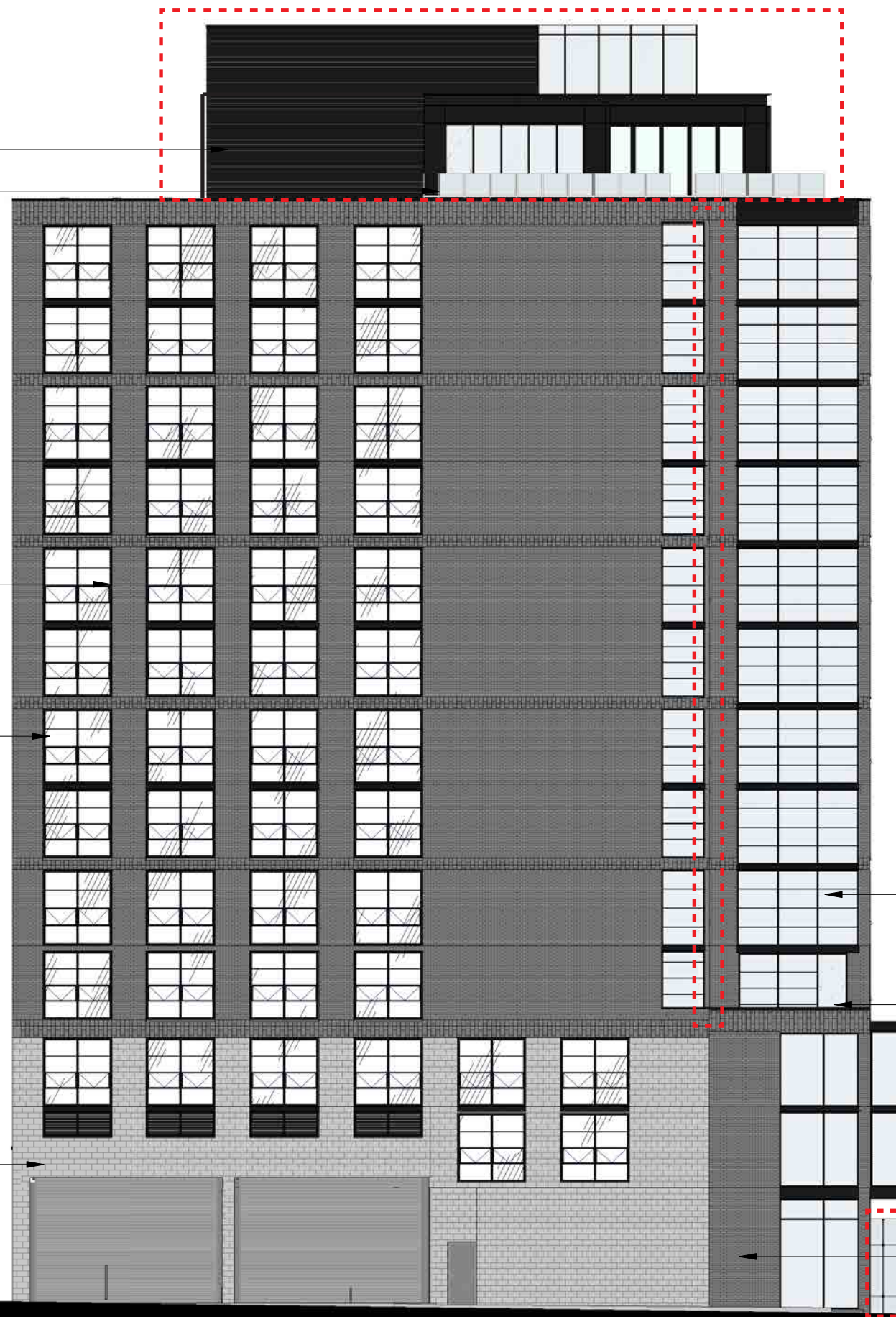
INDUSTRIAL WINDOW

GLASS RAILING

SPLIT FACE BLOCK

K ST.

A019





A020

6TH & K HOTEL N.W, WASH. DC

VIEW1 | APPROVED

DATE: 09.17.2018

FILLAT+
ARCHITECTURE



A020

6TH & K HOTEL N.W, WASH. DC

VIEW1 | PROPOSED

DATE: 09.17.2018

FILLAT+
ARCHITECTURE



A021

6TH & K HOTEL N.W, WASH. DC

VIEW2 | APPROVED

DATE: 09.17.2018

FILLAT+
ARCHITECTURE



A021

6TH & K HOTEL N.W, WASH. DC

VIEW2 | PROPOSED

DATE: 09.17.2018

FILLAT+
ARCHITECTURE



A022

6TH & K HOTEL N.W, WASH. DC

VIEW3

DATE: 09.17.2018

FILLAT+
ARCHITECTURE



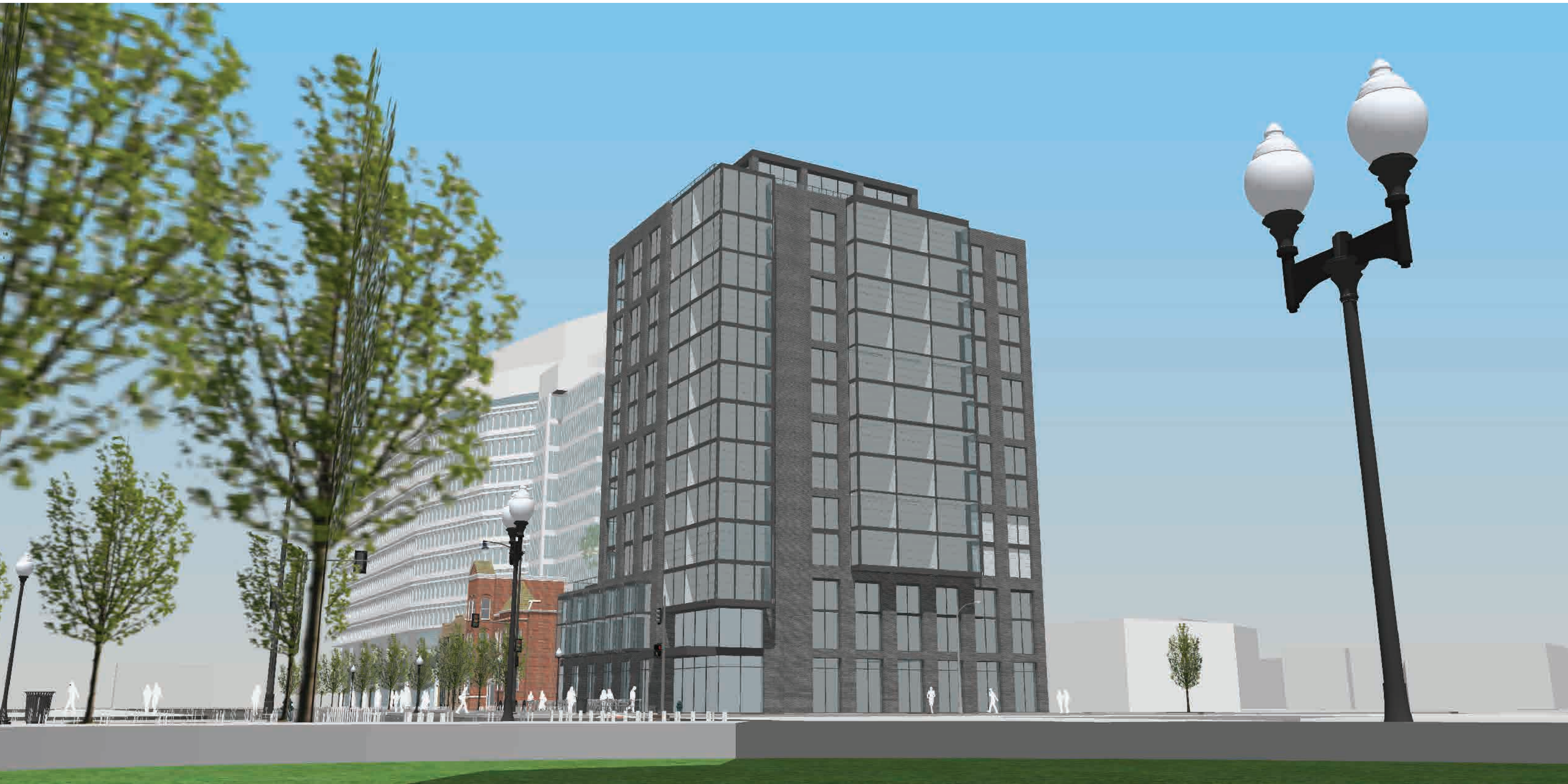
A022

6TH & K HOTEL N.W, WASH. DC

VIEW3 | PROPOSED

DATE: 09.17.2018

FILLAT+
ARCHITECTURE



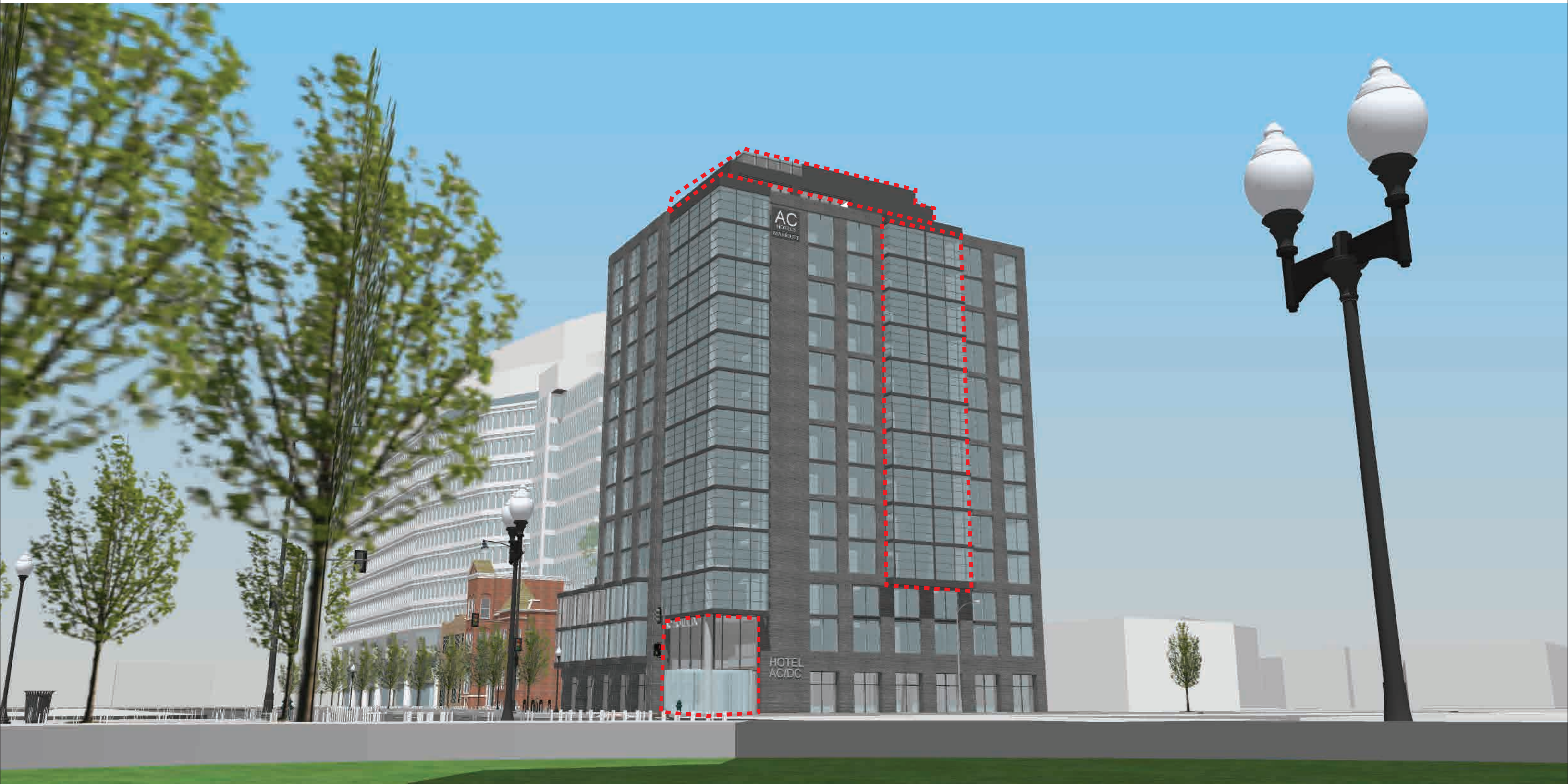
A023

6TH & K HOTEL N.W, WASH. DC

VIEW4

DATE: 09.17.2018

FILLAT+
ARCHITECTURE



A023

6TH & K HOTEL N.W, WASH. DC

VIEW4 | PROPOSED

DATE: 09.17.2018

FILLAT+
ARCHITECTURE